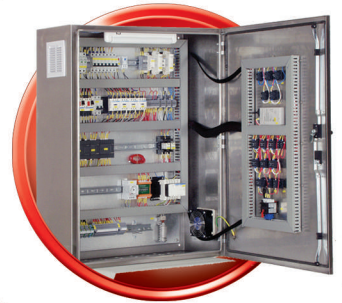


enclosure
systems

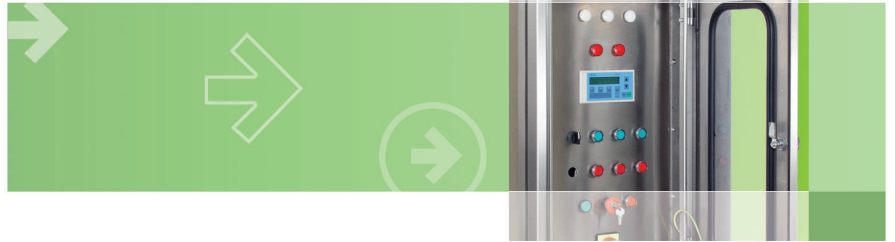
www.eltepano.com
sales@eltepano.com



Expertise in stainless steel

ELTE

ELTE PANO

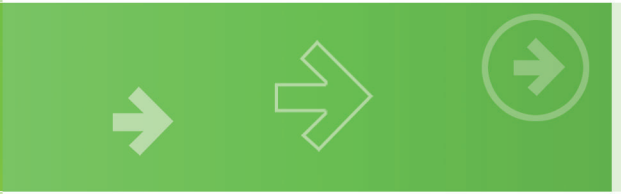


PSd STAINLESS STEEL FREE STANDING ENCLOSURES (Assembly)

Free Standing Types

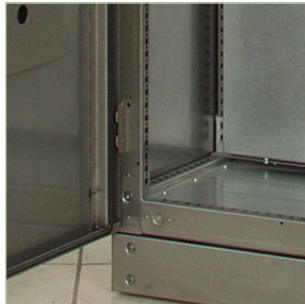
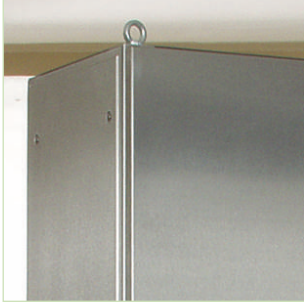
- Demontable, Free Standing Modular Type
- Main Frame; 1,50mm Stainless Steel , W-Profile System
- Covers; 1,20mm Stainless Steel
- Front Door; 1,50mm Stainless Steel
- Grounding Continuity
- Poliurethane Gasket Foamed, Protection Class IP55
- 4 Point Locking System at the Doors
- Covers are Removable and Fixed by screws
- 135° opening Hinge System at Doors
- Functional Accessories and Fixing Equipments
- Locking System and screws can be stainless
- Wide Dimension Alternatives
- Compatibility to IEC, EN, TS standards
- TS EN 60529
- TS EN 62208
- TS EN 60439-1





Enclosure Solutions

PS
STAINLESS STEEL SERIES



Stainless Steel Series



PSd STAINLESS STEEL FREE STANDING ENCLOSURES (Assembly)

Base Dimensions excluded

PSd H=2020 mm

h2020

P/N	Width (W) mm	Depth (D) mm
PSD 20254	500	400
PSD 20255		500
PSD 20256		600
PSD 20257		700
PSD 20258		800
PSD 20264	600	400
PSD 20265		500
PSD 20266		600
PSD 20267		700
PSD 20268	700	800
PSD 20274		400
PSD 20275		500
PSD 20276		600
PSD 20277		700
PSD 20278	800	

PSd H=1860 mm

h1860

P/N	Width (W) mm	Depth (D) mm
PSD 18654	500	400
PSD 18655		500
PSD 18656		600
PSD 18657		700
PSD 18658		800
PSD 18664	600	400
PSD 18665		500
PSD 18666		600
PSD 18667		700
PSD 18668	700	800
PSD 18674		400
PSD 18675		500
PSD 18676		600
PSD 18677		700
PSD 18678	800	



PS Standard Configuration			
Modules		Quantity	Unit
PDP	Vertical Profile	4	Pcs
PYP	Horizontal Width Profile	4	Pcs
PYP	Horizontal Depth Profile	4	Pcs
PKB	Corner Set (steel)	8	Set
PMT	Mounting Plate	1	Set
PUK	Top Cover	1	Set
PAP	Bottom Plate	1	Set
PAK	Back Cover	1	Set
PYK	Side Cover	2	Set
PKP	Front door	1	Set
PBZ	Base Module (h:100mm)	1	Set
PCG	PC-Grounding Set	1	Set





Ürün
Çözümleri



STAINLESS STEEL SERIES

PSd STAINLESS STEEL FREE MOUNTED ENCLOSURES (Assembly)

Base Dimensions excluded

PSw

h400

P/N	width (W) mm	Depth (D) mm
PSW 40315	300	150
PSW 40320		200
PSW 40420	400	200

h500

PSW 50415	400	400
PSW 50420		500
PSW 50425		600

h600

PSW 60415	400	400
PSW 60420		500
PSW 60425		600
PSW 60520	500	700
PSW 60525		800

h700

PSW 70520	500	400
PSW 70525		500
PSW 70620	600	600
PSW 70625		700
PSW 70630		800

h800

PSW 80520	500	200
PSW 80525		250
PSW 80530		300
PSW 80620	600	200
PSW 80625		250
PSW 80630		300

h900

PSW 90625	600	250
PSW 90630		300

h1000

PSW 10625	600	250
PSW 10630		300
PSW 10640		400
PSW 10725	700	250
PSW 10730		300
PSW 10740		400



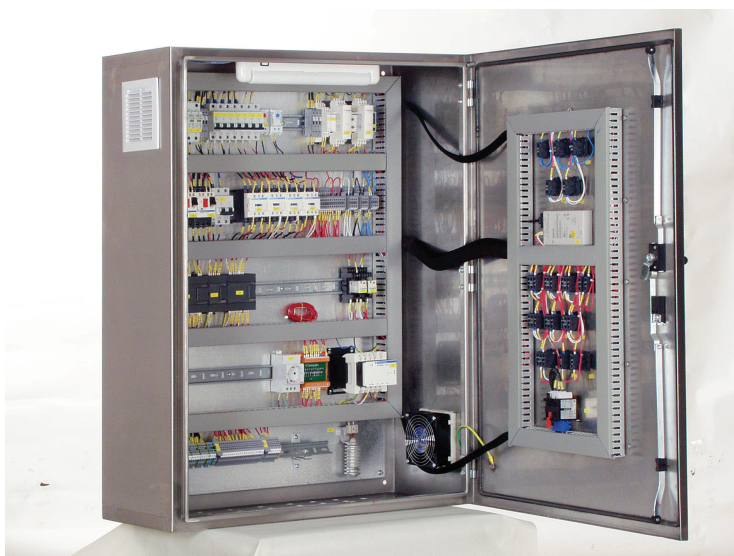
PS

STAINLESS STEEL SERIES



PS STAINLESS STEEL (Assembled)

All Dimensions are in (mm)



5

www.eltepano.com



Enclosure Solutions





About us

PS

STAINLESS STEEL SERIES

About us

ELTE PANO is one of the leading and fast growing companies in its sector in Turkey with its machinery and technologic structure, qualified and skilled personnel and increasing production capacity.

ELTE PANO keeps moving ahead by following developments very closely in its sector in the world. ELTE PANO has vision to adopt these developments to its production to fulfill international standarts by renewing its machinery park.

Our vision and policy is to create "93on-time, quality, economical products and solutions"94 to our customers and gain trust or our customers with our promised service.

ELTE PANO produces, Low voltage switchgear enclosures, busbar and fiberoptical cabling cabinets, outdoor type cabinets for communication industry, electronic tool boxes, and other sheet metal fabrication products from stainless steel, alumimium, galvanised and mild steel.

ELTE PANO supportes these products with its service applications by engineering and designing according to international standarts and customer requirements. As our corporate policy, our vision is to focus thoroughly on customer satisfaction by succeeding our promises in a way which will create reliability, trust, value-added solutions.

Our key values are "Passion, Respect, Team Work, Customer, Synergies, Profit and Achive future goals by enhancing value chain and improving the partnership between our customers and end users". The heart of our business is to choose, train, motivate and involve our co-workers who we strongly believe that they are the key to our steady development.

OUR VALUES

Customers are the Priority

To Establish Trustful Partnership with our Customers

Close Contact with our Customers and Contuniously Enhance Service Quality

Keep on Learning and Sharing our Knowledge

Desire to Come-up with Innovative Solutions

Listen to our Customers, Clearly Identify the Needs, Organize Ourselves to Satisfy Them



ELTE PANO ELK. MAK. MET. MÜH.
SAN. VE TİC. LTD. ŞTİ.

Istanbul Deri Organize Sanayi Bölgesi Güderi Cad.
(7A Yolu) P1 Özel Parsel No:16 Tuzla-İSTANBUL

Tel : +90 216 484 0 666 Fax : +90 216 484 08 60

www.eltepano.com

satis@eltepano.com

sales@eltepano.com